

Creu Dyluniad Cynllun Adeiladu Newydd Rhanbarthol ar gyfer Llety Plant

Creation of Regional New Build Blueprint Design for Childrens Accommodation



West Wales RPB Capital PMO

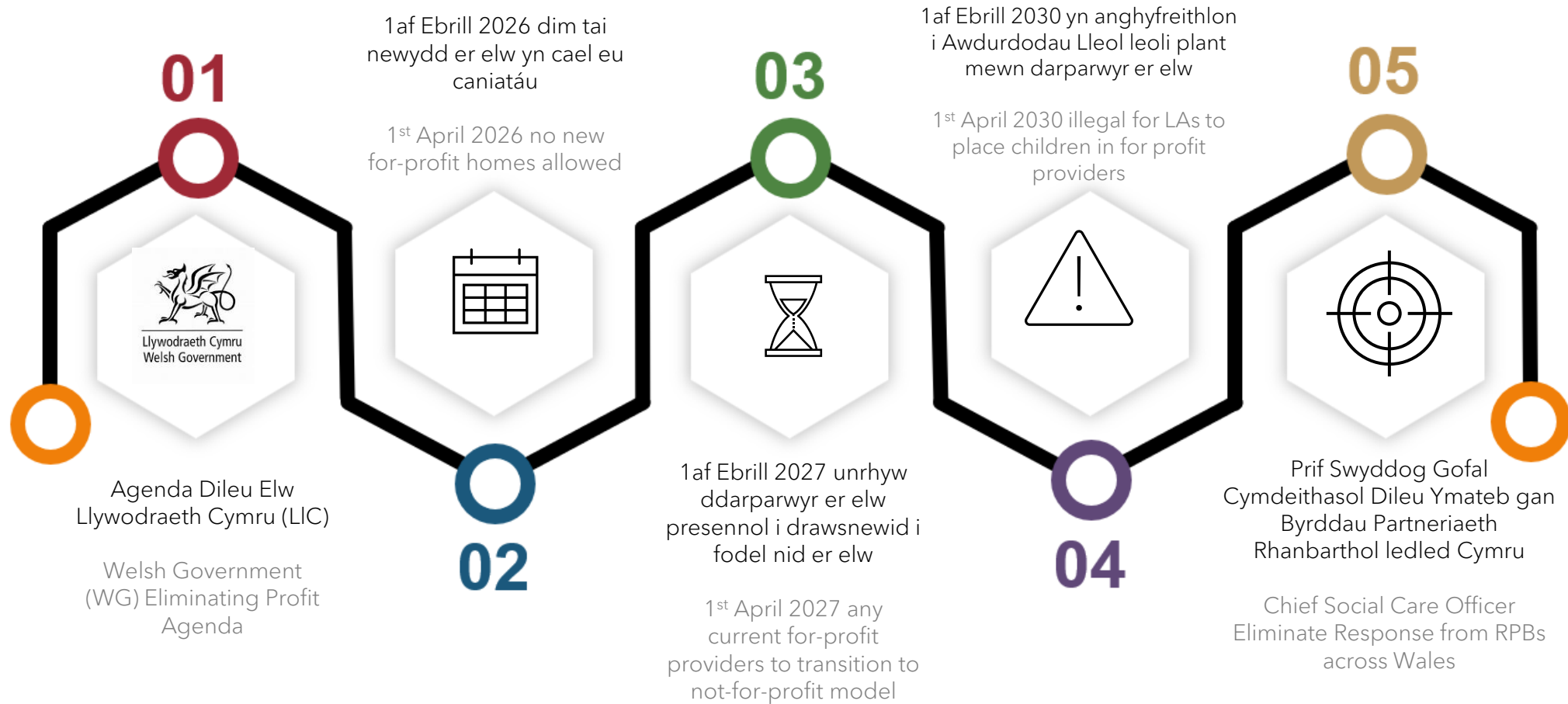


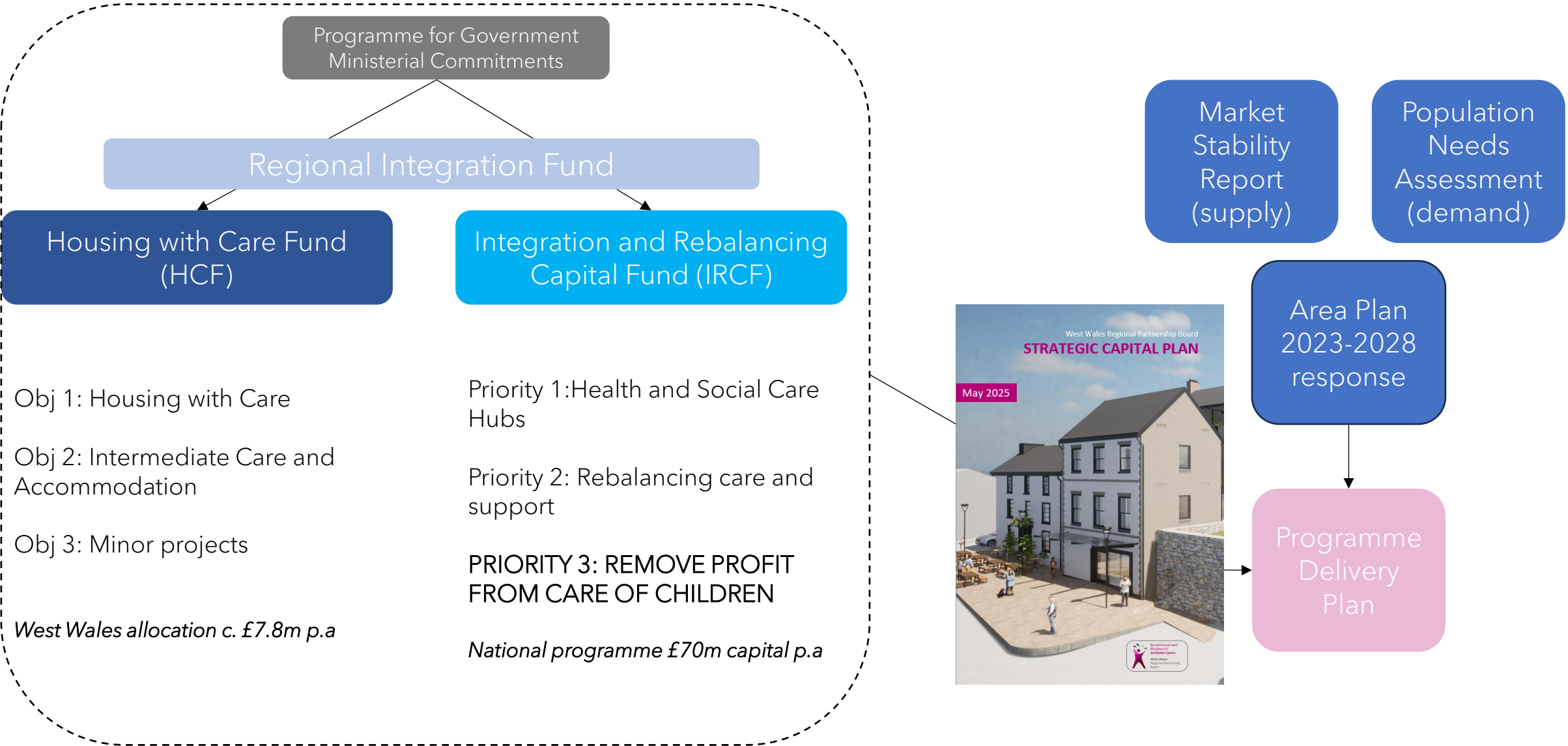
wwcapitalpmo@carmarthenshire.gov.uk

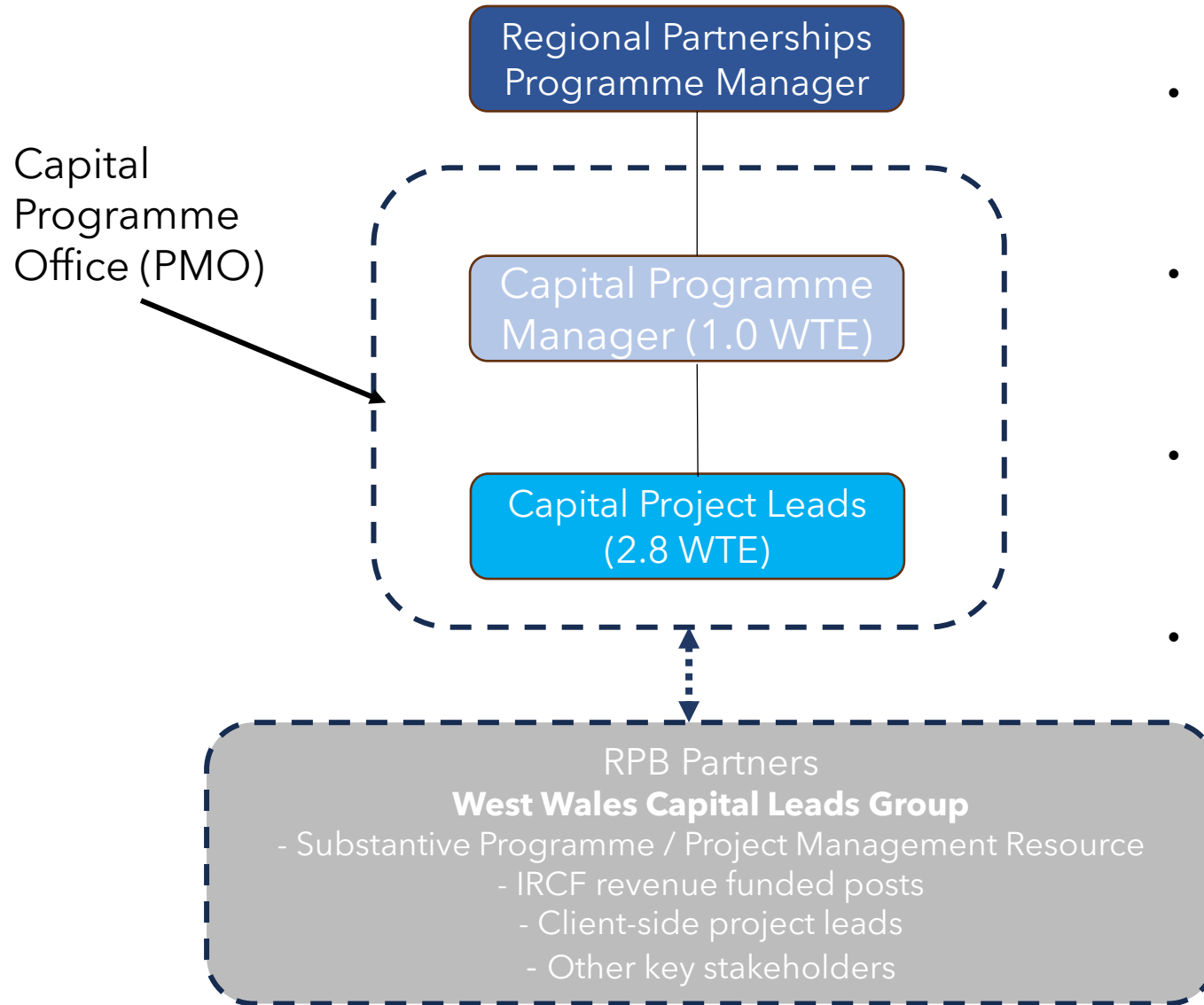


Bwrdd Partneriaeth
Rhanbarthol
Gorllewin Cymru

West Wales
Regional Partnership
Board

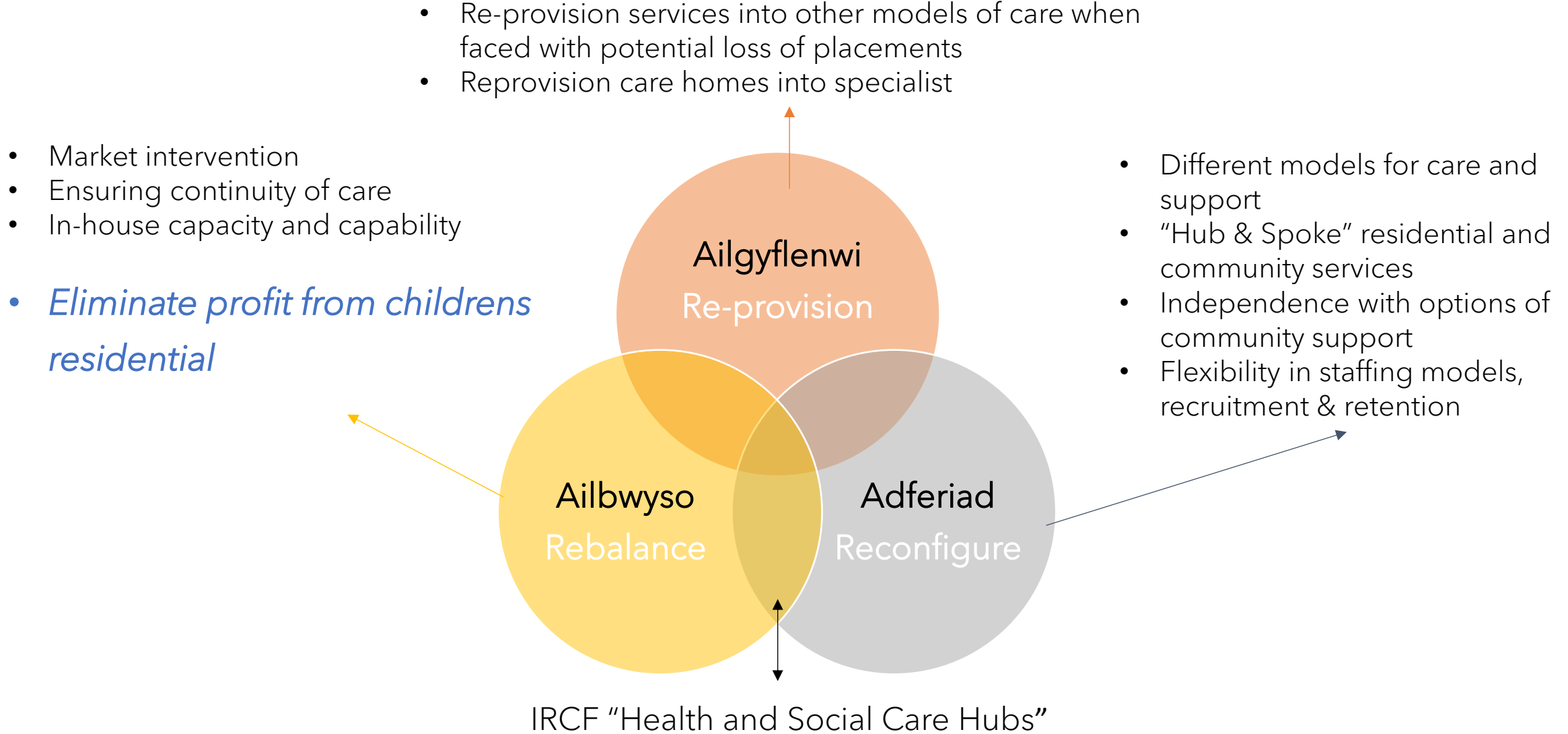






- The Capital PMO is led by the Capital Programme Manager, reporting to the Regional Partnerships Programme Manager.
- 3 Project Leads are employed to support partner organisations in developing capital projects and initiatives.
- The team's knowledge, skills and experience means that they can be deployed flexibly as the RPB capital programme gains momentum and maturity.
- The regional programme is engrained into governance through the embedding of Capital Leads as part of a "dotted line" to the Capital PMO









"To agree and create new build regional blueprint package for single storey and two storey childrens accommodation in West Wales."

- **Objective 1:** To provide a regionally agreed and compliant New Build Blueprint Design Package for Childrens Accommodation in West Wales (both single and two storey)
- **Objective 2:** Demonstrate regional collaboration and integrated working, which will help support the work LA's must undertake to address and adhere to the WG eliminate agenda by April 2027
- **Objective 3:** To help streamline future capital applications, in both time and resource in respect of New Build Childrens Accommodation by upfronting a large proportion of design works which can be monitored and reviewed against future capital application financials'





- This piece of work highlighted the value of regional collaboration within strategic capital planning and the diverse role of the team and the ability to support/facilitate group problem solving and shared interests.
- The RPB brought together experienced partners from across West Wales to share ideas and understandings, question assumptions and provide an effective solution for all members, none of which would have been as effective if we didn't work as a group.
- In the current financial climate of local governments where innovative solutions are paramount, this approach offered a structured yet flexible approach to navigating complexity of designing a blueprint package.
- This project directly linked with the recently refreshed West Wales Regional Partnerships Strategic Capital Plan. The connection with the eliminate theme as regional priority, and need for RPB to support this area reflects the importance of this work in respect of the overall strategic capital plan.





- Welsh Government Integration & Rebalancing Capital Fund (IRCF) revenue supported the development of the regional design blueprint for new build childrens homes in West Wales. This monies needed to be spent in full by 31/03/2025, and a completed Concept Design/Plan(s), along with high-level outline costs available for use on future new build childrens residential projects.
- To accompany this concept design, a written design guide/brief was to be collated based on feedback/lessons learnt from stakeholders to date, reference to Scottish design standards/CIW which would provide baseline measures for new build childrens accommodation in West Wales.
- The outcome of this regional collaboration was to have an outline floorplan and design guide to support the delivery of new build childrens homes across West Wales, in the absence of any formal written design brief from WG.



Buddion

Benefits

Gall y gwaith hwn a'r cynllun dylunio terfynol briodoli nifer o fuddion nodedig i ystod o randdeiliaid

This work and ultimate design blueprint can attribute several notable benefits to a range of stakeholders

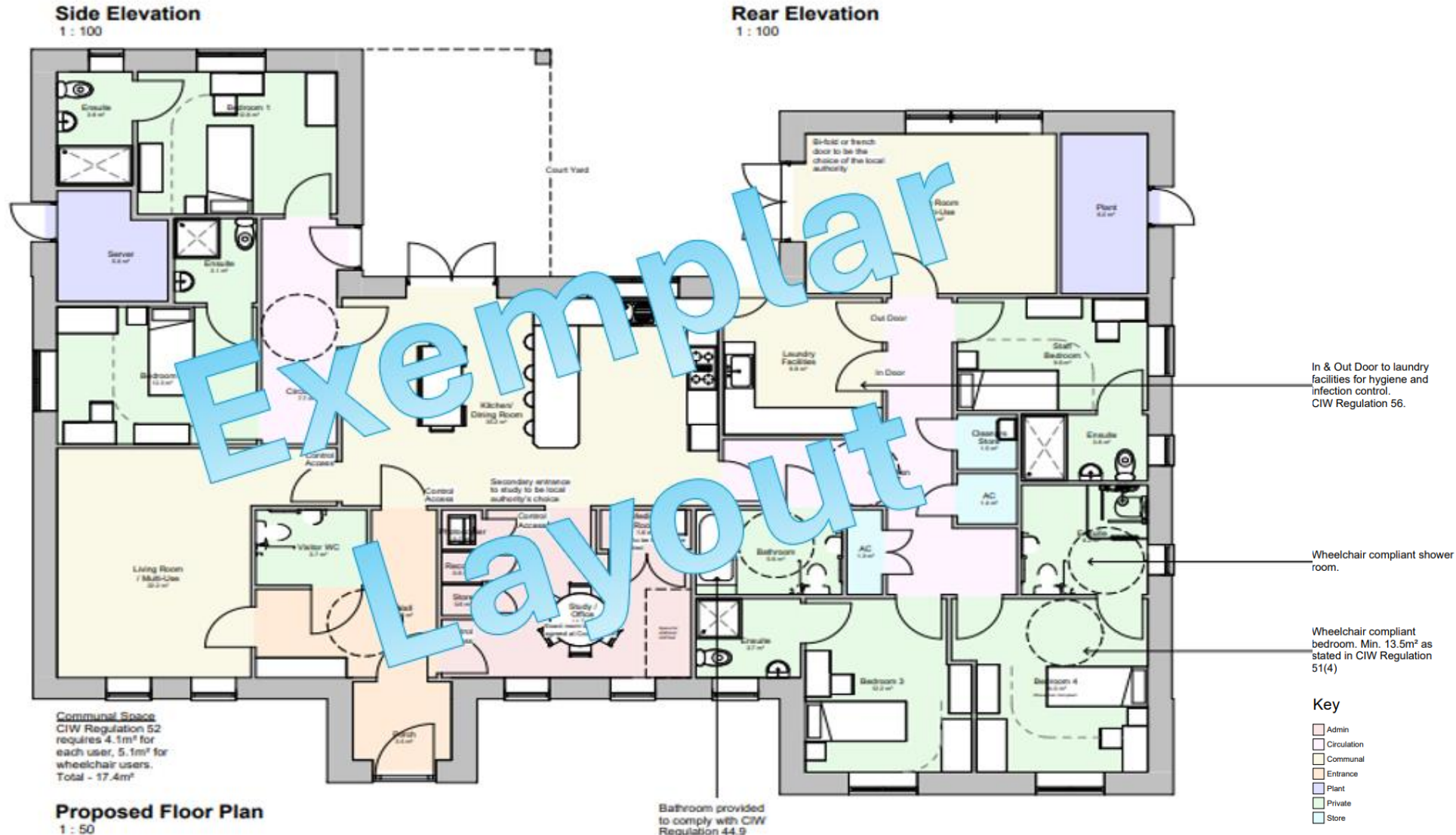
- Arian Arbed /Financial Savings
- Aros Amser /Time Savings
- Effaith strategol /Strategic Impact
- Arloesi a Dysgu /Innovation & Learning
- Dull Partneriaeth/ Partnership approach
- Canlyniadau Gwell/ Improved outcomes
- Gwelliant Parhaus /Continuous Improvement



The key to ensuring this blueprint was beneficial and useful to stakeholders and more importantly the end user, was ensuring we learnt from schemes undertaken to date and also referred to any information we had firsthand from CYP themselves. As a minimum the blueprint had to ensure it

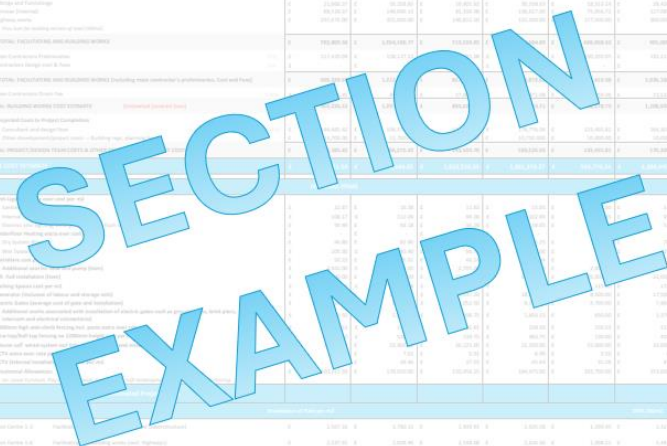
- Complied with CIW registration purposes from an environment and regulatory aspects
- Had agreed rooms dimensions/sizes that could be used as a baseline to increase number of bedrooms if needed from 4 bed blueprint
- Included direct access to outdoor space, ideally with a garden room (or something similar)
- Included ensuite bathrooms for CYP bedrooms
- Didn't have large formal offices for care staff, with the intention of staff spending time with them rather than in an office;
- Had an area where CYP could go if they become anxious, overwhelmed, or just need some time alone e.g. breakout room
- Included bedrooms that felt cosy and comfortable, and enough to accommodate a double bed, desk, wardrobe, and small seat/sofa











- ✓ Base cost estimates for single and two storey new build childrens accommodation in West Wales
- ✓ Indicates the cost variance between counties in the same region owing to transport links, contractor preference, tourism and skill shortages
- ✓ Provides a shopping list to ensure each project can be tailored to adapt the minimum requirements to suit demand of homes e.g. anti ligature etc
- ✓ Provides a base cost to assist with financial planning in the region for WG, LAs and RPBs



Purpose of This Document

This document has been created on a regional level with partners across the West Wales region, to co-produce an agreed blueprint design for new build childrens residential accommodation. This design guide and associated works has been funded in partnership with Welsh Government via the Health and Social Care Integration and Rebalancing Capital Fund Programme and as part of the wider West Wales Regional Partnership Board Capital Programme.

This document will help provide an environment young people should expect in childrens care services in West Wales, which will promote high-quality design, planning, and construction. This will subsequently help to create positive experiences and outcomes in a homely environment for all children and young people.

The ethos behind this foundational guide, is to generate an established schedule of accommodation, which can be applied to future childrens accommodation projects of varying size and stature, in the West Wales region and used as the basis for the design, in the absence of any specific Welsh Design standards. It is hoped this work will provide a standardised proposal that provides a clear picture of the design requirements and considerations to those who are involved in the production and creation of such accommodation.

To establish the approved schedule, reference and signposting has been made to the following good practice documents and regulatory body requirements

- Scottish Childrens & Young People Design Guide [care homes for children and young people: the design guide.pdf](#)
- Documentation from Welsh Government for providers in Wales who are considering registering a care home for children [Supporting a care home for children \(2022\) WGLAS](#)
- Reference and alignment to the statutory regulator for childrens homes in Wales, Care Inspectorate Wales (CIW) [Home | Care Inspectorate Wales](#)

Whilst the guidance and principles in this annex have been approved by the region for childrens residential projects, it is accepted that a degree of flexibility should be applied when designing for specific areas where specialist demands may require adjustments to incorporate any specific needs. Furthermore, the region recognise that many regulations and guidance documents will be updated, and with this in mind, the RPB and partners, will continue to review and update this guidance document as a minimum biannually or as required.



2

Contents

Purpose of This Document	2
Principles & Vision	3
General Design	4
Site	5
Entrance & Hallway	5
Bedrooms	5
Bathrooms	5
Communal Spaces	6
Kitchen Dining Area	7
Laundry Facilities	8
Plant & Server Rooms	8
Cleaners Store	9
Storerooms	9
Staff Office	9
Outdoor Space	10
Parking	10
Digital	11
Fire	11
Health & Safety	11
Fire Safety	11
Building Control & Regulations	12
Secure By Design	12
Planning	12
Regional Variations	12
Location & Site Constraints	12
Single or Two Storey Property	13
Parking	13
Generators	13
External Finish	13
Landscape	13
Structure	14
Internal Specifications	14
Financial	14
Summary	14
Supporting Documentation	15



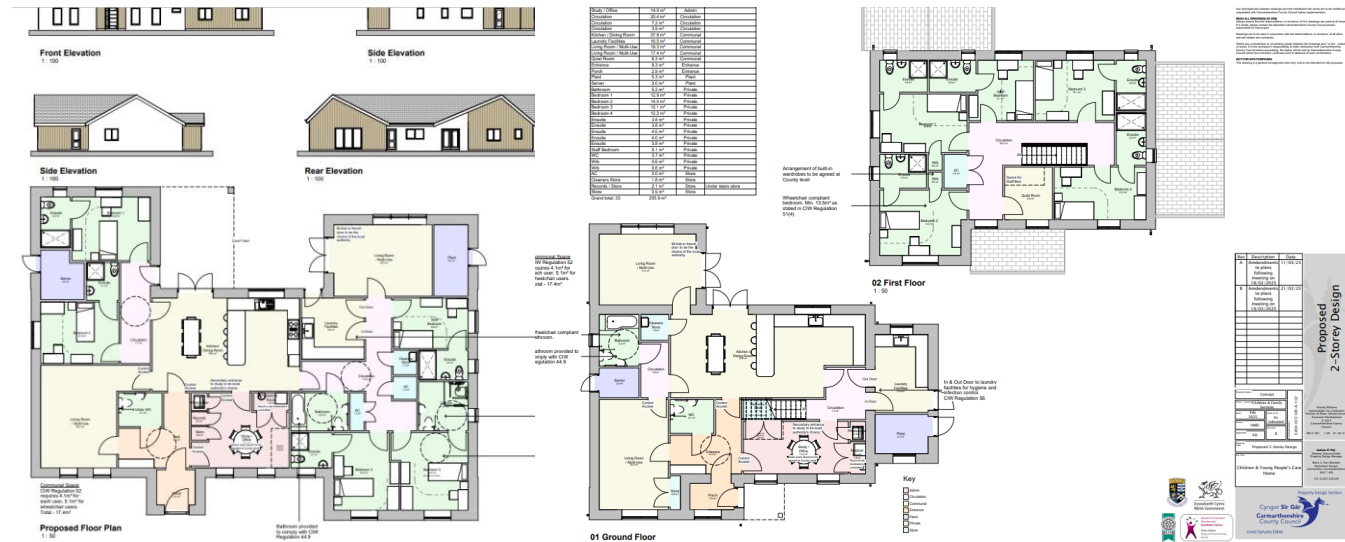
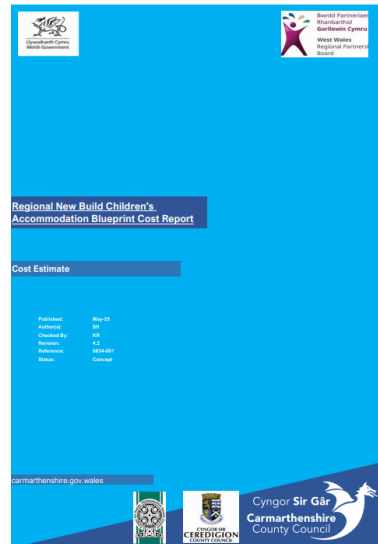
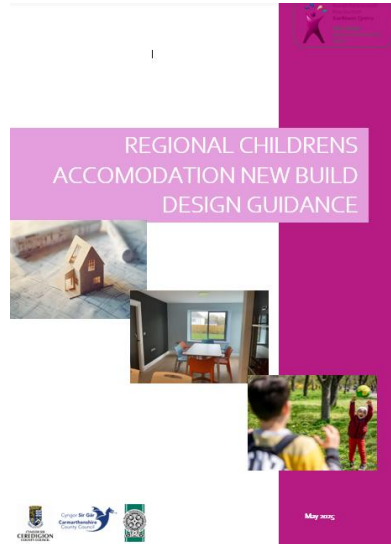
1

The collated design guide sits alongside the agreed regional Schedule of Accommodation (and exemplar plans) and provides a foundational guide to designing a new build childrens home. It provides reference to the mandatory requirements to ensure a project is compliant from a design perspective and incorporates lessons learnt that are highly beneficial to include.

At the forefront of the delivery of this works was the understanding that ***"a childrens home is exactly that, a home"***.

This common recognition by the group ensured that all members understood first and foremost the design needed to be a home where CYP can feel safe and supported with their own bedroom and network to encourage them to get involved in activities in accommodation that is in line with legislative requirements.





Vision

To create and agree on a new build regional blueprint for single storey and two storey childrens accommodation in West Wales.

Objectives

- **Objective 1:** To provide a regionally agreed and compliant New Build Blueprint Design Package for Childrens Accommodation in West Wales (both single and two storey).
- **Objective 2:** Demonstrate regional collaboration and integrated working, which will help support the work LA’s must undertake to address and adhere to the WG eliminate agenda by April 2027.
- **Objective 3:** To help streamline future capital applications, in both time and resource in respect of New Build Childrens Accommodation by upfrontng a large proportion of design works which can be monitored and reviewed against future capital application financials’.

Inputs

Outputs

Outcomes

Impacts

- | | | | |
|---|---|--|--|
| <ul style="list-style-type: none">• Identification of Integration & Rebalancing Capital Fund (IRCF) Revenue funding of £17,743 during 2024/25 | <ul style="list-style-type: none">• Regionally agreed RIBA 2 Stage New Build Blueprint Design Package for childrens residential schemes, that meets regulatory requirements and is signed off by partners, Care Inspectorate Wales (CIW) and Welsh Government (WG). | <ul style="list-style-type: none">• Can help improve ability to deliver bed space to support identified gaps in provision or address providers exiting market• Puts West Wales on map and provides solution to current gap in design standards in Wales• Strengthened integration between WG and Local Authorities in the region• Increase outcomes for LAC in the region by providing quality designed childrens homes locally | <ul style="list-style-type: none">• A regionally mutually agreed blueprint that which provides a model for future collaboration in other areas• Supports LAs plans to meet WG eliminate agenda targets through having an on the shelf package, to speed up design processes e.g. reduction of approx. 6 months lead time in initial design• Greater service resilience through standardisation in the region• Financial benefits with regional cost savings of approximately £54,000 across 3 LAs in West Wales. These savings in initial design costs will also enable the capped HCF regional pot to stretch further in respect of future projects, thus potentially reducing LA match contribution . |
|---|---|--|--|





- Regional group to meet on a 6-month basis (next meeting scheduled for September 2025) to review the agreed blueprint package and update any changes as required e.g. legislative, lessons learnt from new projects, feedback etc.
- A forum for sharing lessons learnt at a regional level and potential for any regional trends to be discussed e.g. commercial, WG application & processes, internal environments to be considered e.g. positioning of furniture, paint colours, bringing the outdoor in etc.
- Continued dialogue with CIW as required for comment on any amendment to blueprint package and on a project-by-project basis prior to tender release of design package etc
- Consideration to apply approach to other thematic areas within the RPB remit/funding parameters.



Unrhyw Gwestiynau?
Any questions?



Diolch
Thankyou



Bwrdd Partneriaeth
Rhanbarthol
Gorllewin Cymru

West Wales
Regional Partnership
Board